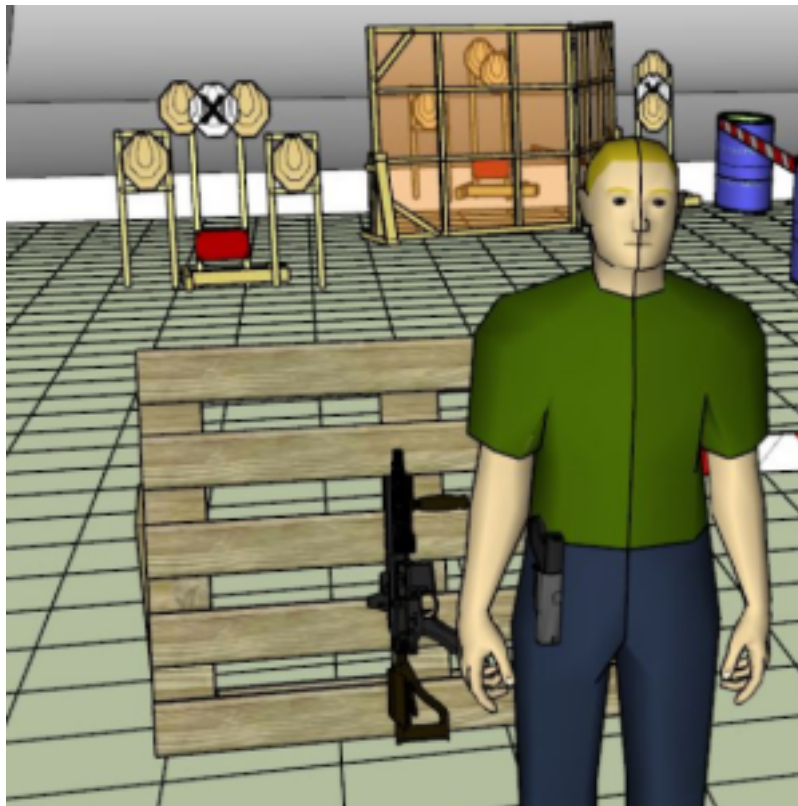


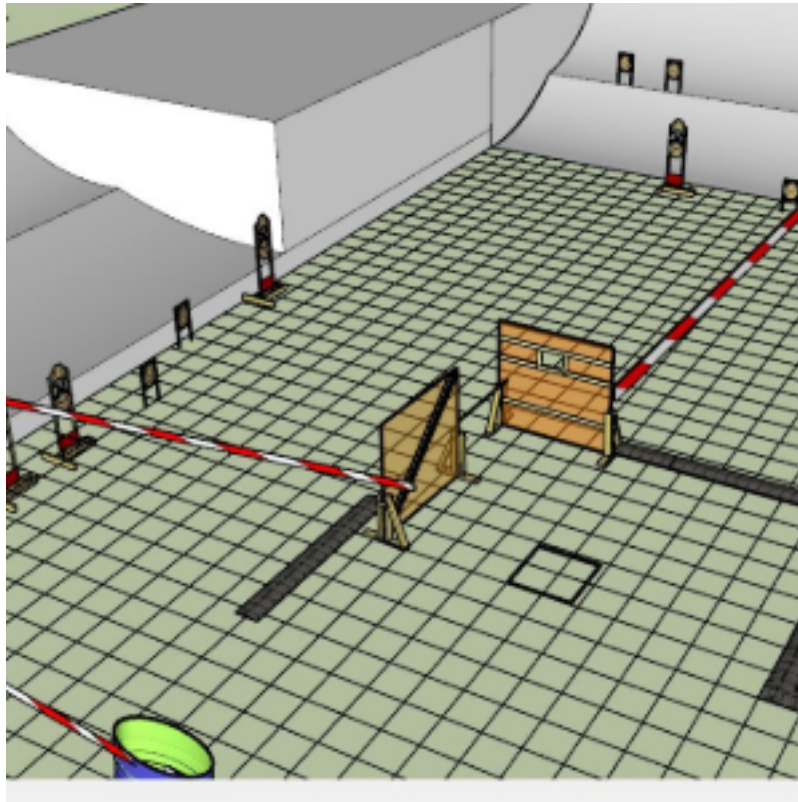
1. Find your stuff



| | | | |
|---------|--------------------------------------|------------|--------|
| CoF | Comstock - Medium | Points | 90 p |
| Targets | 9 paper, 2 no-shoot, Total 9 targets | Min rounds | 18 |
| Firearm | Mini Rifle | Match-% | 19.57% |

| | |
|-------------------------|--|
| Procedure | On start signal engage all targets as they become visible. |
| Starting position | Rifle supported against pallet, all magazines to be used on barrel. Facing uprange |
| Firearm ready condition | Option 3 |
| Start on | Audible signal |
| Stop on | Last shot |
| Penalties | As per current edition of rules |
| Safety angles | Left side red and white tape on stick, right side 90 deg, top of berm + 2 meters |
| Setup notes | |

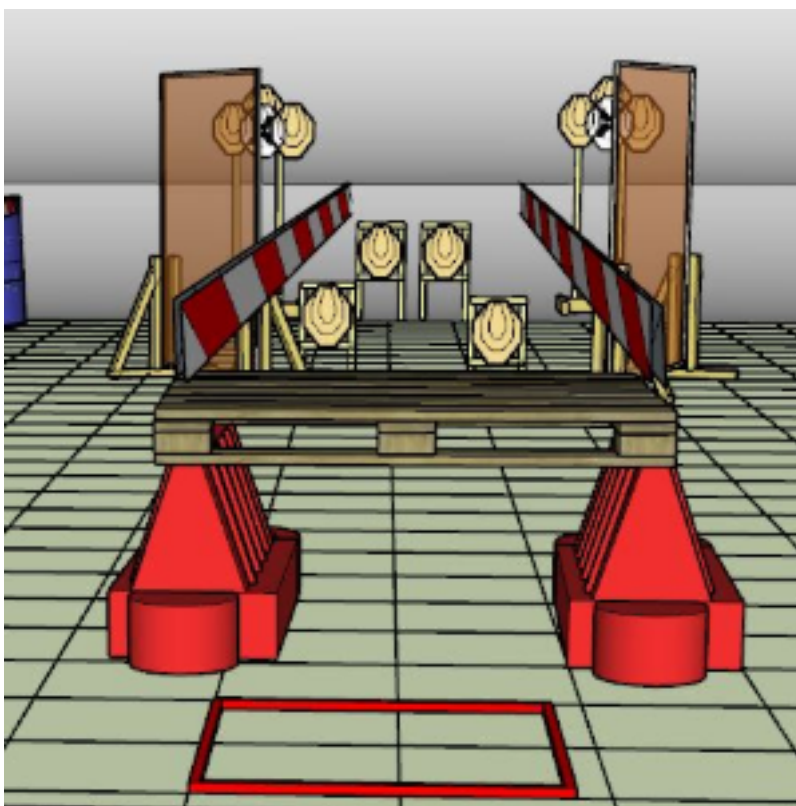
2. Find the targets



| | | | |
|---------|--|------------|--------|
| CoF | Comstock - Long | Points | 160 p |
| Targets | 16 paper, 5 no-shoot, Total 16 targets | Min rounds | 32 |
| Firearm | Mini Rifle | Match-% | 34.78% |

| | |
|-------------------------|---|
| Procedure | On start signal engage all targets as they become visible within the demarked area. |
| Starting position | Standing in box facing downrange |
| Firearm ready condition | option 1 |
| Start on | Audible signal |
| Stop on | Last shot |
| Penalties | As per current edition of rules |
| Safety angles | Left side red and white tape on stick, right side 90 deg, top of berm + 2 meters |
| Setup notes | |

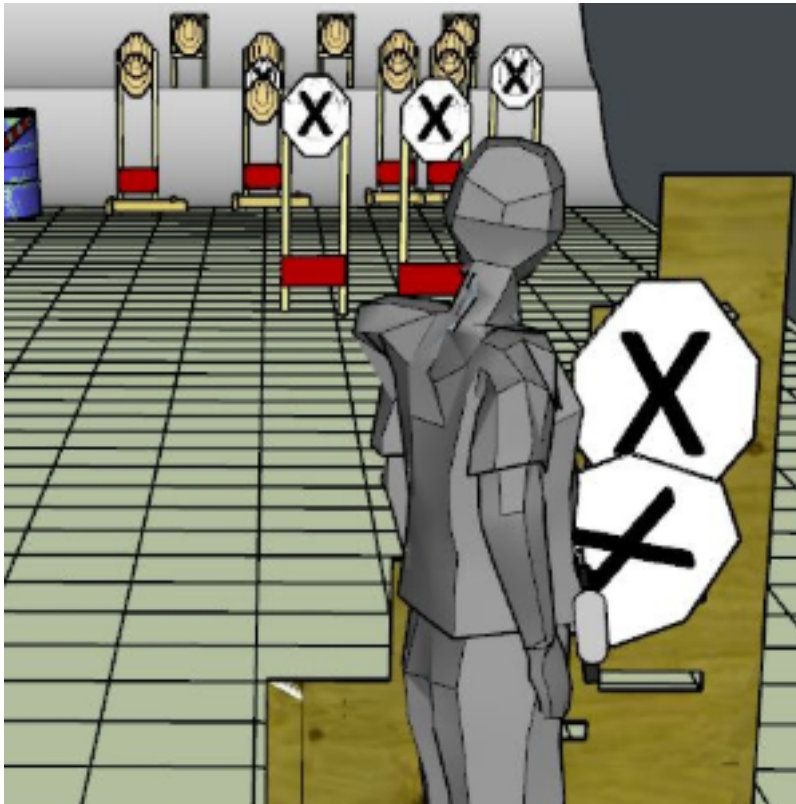
3. Use the aperture



| | | | |
|---------|--|------------|--------|
| CoF | Comstock - Medium | Points | 100 p |
| Targets | 10 paper, 2 no-shoot, Total 10 targets | Min rounds | 20 |
| Firearm | Mini Rifle | Match-% | 21.74% |

| | |
|-------------------------|---|
| Procedure | on start signal engage all targets from within the demarked area. Center targets must be shot using aperture. |
| Starting position | Standing in box facing downrange |
| Firearm ready condition | option 2 |
| Start on | Audible signal |
| Stop on | Last shot |
| Penalties | As per current edition of rules |
| Safety angles | L/R |
| Setup notes | Left side 90 deg, right side 90 deg, top of berm + 2 meters |

4. Use the wall



| | | | |
|---------|--|------------|--------|
| CoF | Comstock - Long | Points | 110 p |
| Targets | 11 paper, 4 no-shoot, Total 11 targets | Min rounds | 22 |
| Firearm | Mini Rifle | Match-% | 23.91% |

| | |
|-------------------------|---|
| Procedure | on start signal engage all targets using the wall. All openings in wall must be used at least once. If not all openings in wall are used the shooter will receive two penalties per opening in wall not used. |
| Starting position | Gun loaded & holstered |
| Firearm ready condition | Option 1 |
| Start on | Audible signal |
| Stop on | Last shot |
| Penalties | As per current edition of rules |
| Safety angles | Left side 90 deg, right side red and white tape on stick, top of berm + 2 meters |
| Setup notes | |